

# DRAMM AME FAN WIRING INSTRUCTIONS

**NOTE: Three Wire Installation is Better for Large Installations.**  
This will reduce motor wear and electrical consumption.

For best results the AME fans use a three wire regulation of motor speed. This increases electrical efficiency and reduces wear on the motor. In a three wire regulation installation of the AME fans full current 220v is connected to the start winding of the motor, the variable control current is connected to the run winding of the motor. This allows for a lower starting load, lower running load and less heat build up. The result is greater electrical efficiency and a longer motor life.

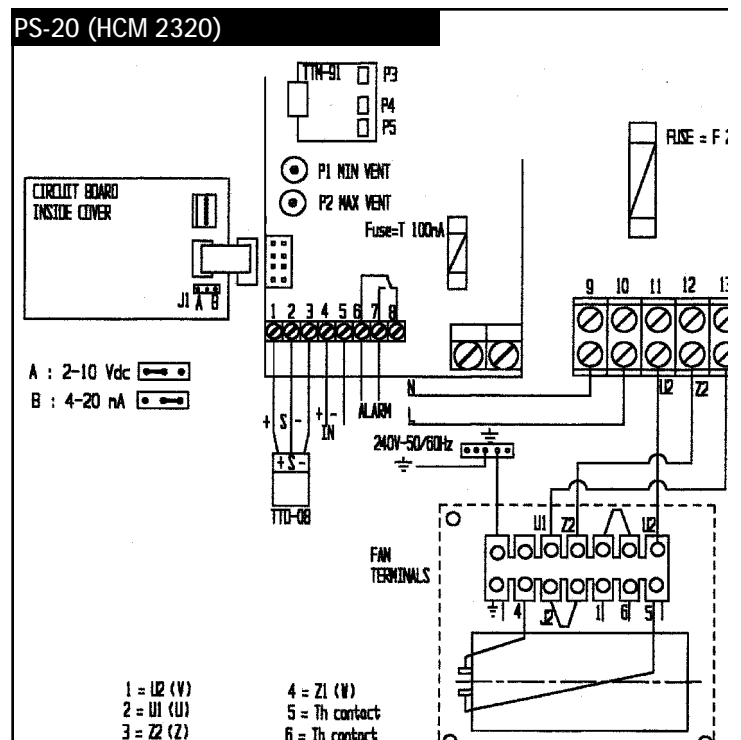
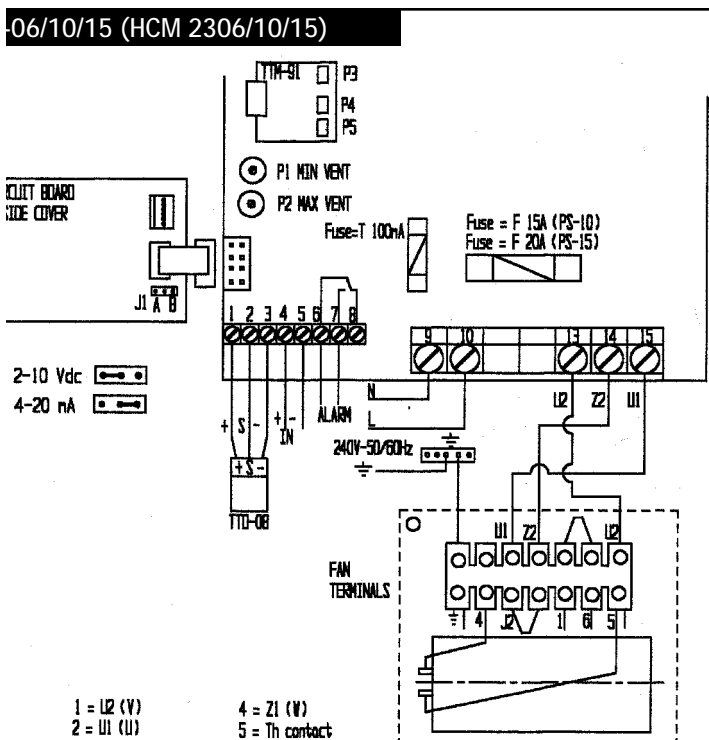
## General Guidelines:

### Two Wire Installation:

- PS-06/10/15: Connect Line U1 from controller terminal 15 to fan terminal U1.  
Connect Line U2 from controller terminal 13 to fan terminal Tk (last).
- PS-20: Connect Line U1 from controller terminal 13 to fan terminal U1.  
Connect Line U2 from controller terminal 11 to fan terminal Tk(last).

### Three Wire Installation:

- PS-06/10/15: Connect Line U1 from controller terminal 15 to fan terminal U1.  
Connect Line Z2 from controller terminal 14 to fan terminal Z2.  
Connect Line U2 from controller terminal 13 to fan terminal Tk(last).  
Remove jumper between U1 and Z2 (J2) on the rear of the terminal strip  
*see diagram and photos*
- PS-20: Connect Line U1 from controller terminal 13 to fan terminal U1.  
Connect Line Z2 from controller terminal 12 to fan terminal Z2.  
Connect Line U2 from controller terminal 11 to fan terminal Tk(last).  
Remove jumper between U1 and Z2 (J2) on the rear of the terminal strip  
*see diagram and photos*

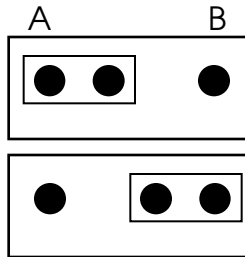
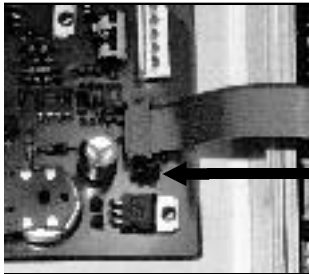


# DRAMM AME FAN INSTALLATION ADDITIONS

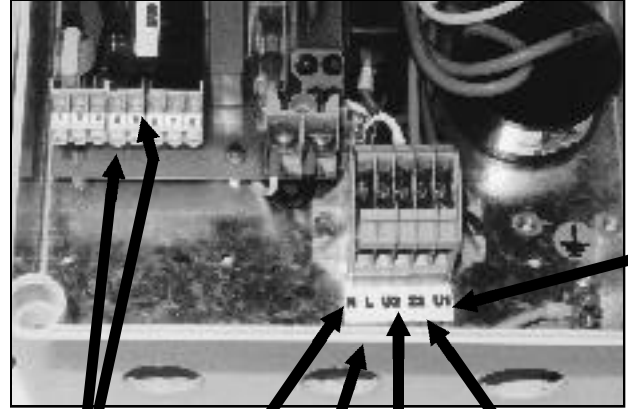
To control for an external source, connect control wires to terminals 4 and 5. Select correct control source with jumper J1. Bridge moves between A and B.

See diagram and photos

Jumper J1 for External Control



## PS-20 Terminals



Control input

L

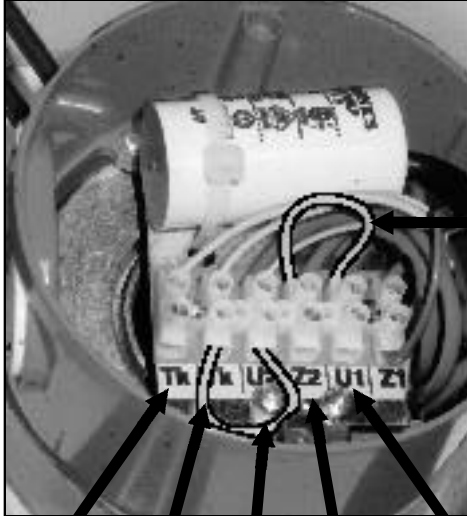
L

Connect to TK last on Fan

Connect to Z2 last on Fan (3 wire only)

Connect to U1 on Fan

## Dramm AME Fan Capacitor & Terminals



Remove jumper for 3-wire regulation only

Connect to controller terminal PS-0/15 # 13 or PS-20 # 11

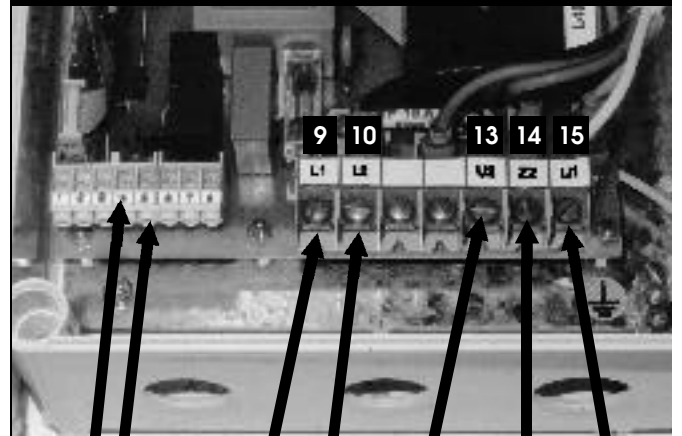
DO NOT remove this jumper

Ground

connect to controller terminal PS-10/15 # 14 or PS-20 # 12 (3 wire only)

connect to controller terminal 15 PS-10/15 # 15 or PS-20 # 13

## PS-06/10/15 Terminals



Control input

NOTE: Terminals may be labeled 9-15 or by designation

L

L

Connect to TK last on Fan

Connect to U1

Connect to Z2 last (3 wire only)