

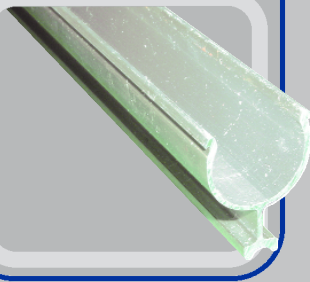
DRAMM

ALUMINUM POLY-RAIL SYSTEM

The Dramm Poly-Rail™ is a versatile, efficient system of hanging poly tubing for many different applications. This technology is being used in greenhouses, livestock barns, and commercial buildings.



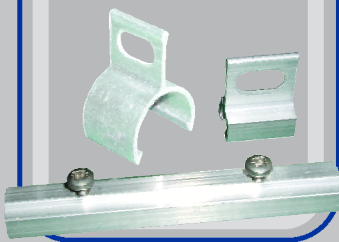
POLY-RAIL



The 16mm or 25mm poly pipe is easily fitted by pressing it into the Poly-Rail™; you will feel it snap into place.

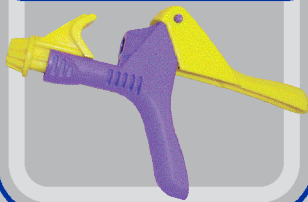
Poly-Rail™ is fitted with a connecting strip every 12'. Each section requires 2 or more hangers before a connecting strip is installed. Locking tabs are available for locking hangers into place and for the end of each run. The above components combine for easy installation.

CONNECTING BANDS



The Dramm Poly-Rail™ is capable of hanging baskets in any commercial or retail setting, once installed and supported at 4' – 6' intervals. The time used for fitting this system is considerably shorter and more cost effective than most other systems. After correct installation, the Poly-Rail™ system is horizontally level, with no sagging of polypropylene tubing. The system offers the option of nozzles positioned upright, downward or at 90° angles. The Poly-Rail™ system is perfect for drip line, overhead irrigation, and supply lines.

MIRACLE PUNCH



FEATURES

- Lightweight Aluminum Structure
- 3-Position U-Rail Design

BENEFITS

- Corrosion Resistant/Maintains Cooler Water Temp.
- Fits 16mm Poly Tubing for Upright, Drop Inversion, or Horizontal Use
- Easy to Install

call for information on larger sizes

DRAMM

Manitowoc, WI
dramm.com
information@dramm.com
800-258-0848